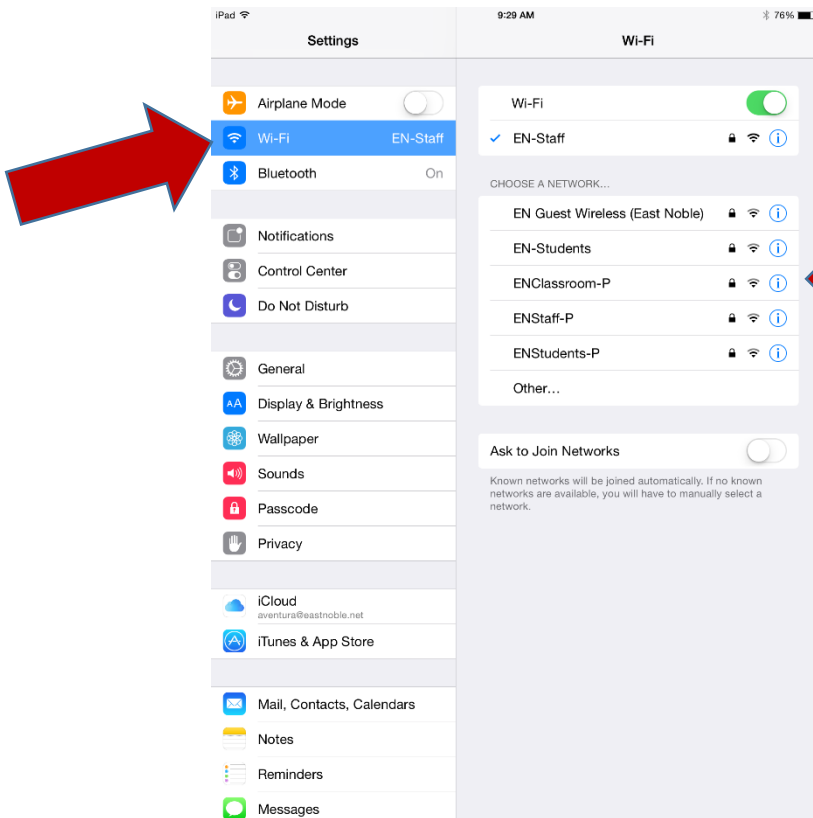


# How to Connect your School iPad to your Home Wi-Fi

## 1. Click on the “Settings” App.

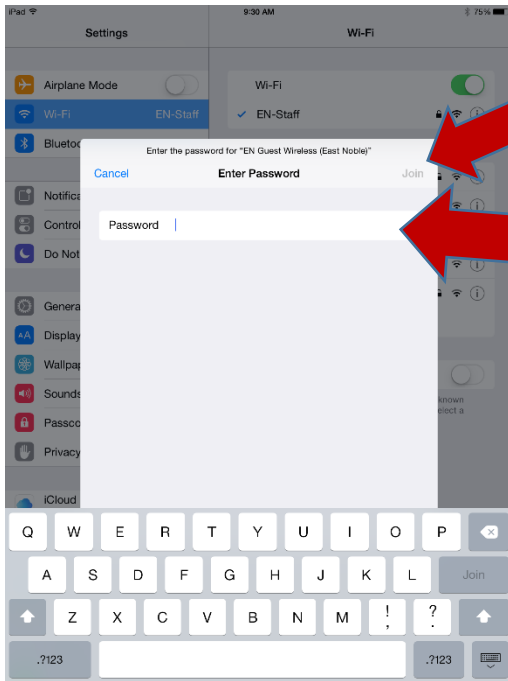


## 2. Click on “Wi-Fi.” Then click on the name of your “Home Wi-Fi.”



Note: The name of your Wi-Fi is unique to your home; it is not listed in the picture to the left, but will be found in the same location.

**3. Enter the Password for your Wi-Fi. Then click “Join.”**



Note: Your password was given to you by your Internet Provider. If you do not know your password, please contact your Internet Provider, not the school, as we do not have this information.

**4. You will now see a “Check Mark” next to your Wi-Fi and the “Wi-Fi Bars” up in the left corner of the screen. You are now connected to your “Home Wi-Fi.”**

