



# Accessing Google Drive Content

## eLearning days



Teachers will have  
eLearning instructions  
posted to Seesaw by  
9:00 AM.



Some teachers also use  
Google Drive to house needed  
documents.

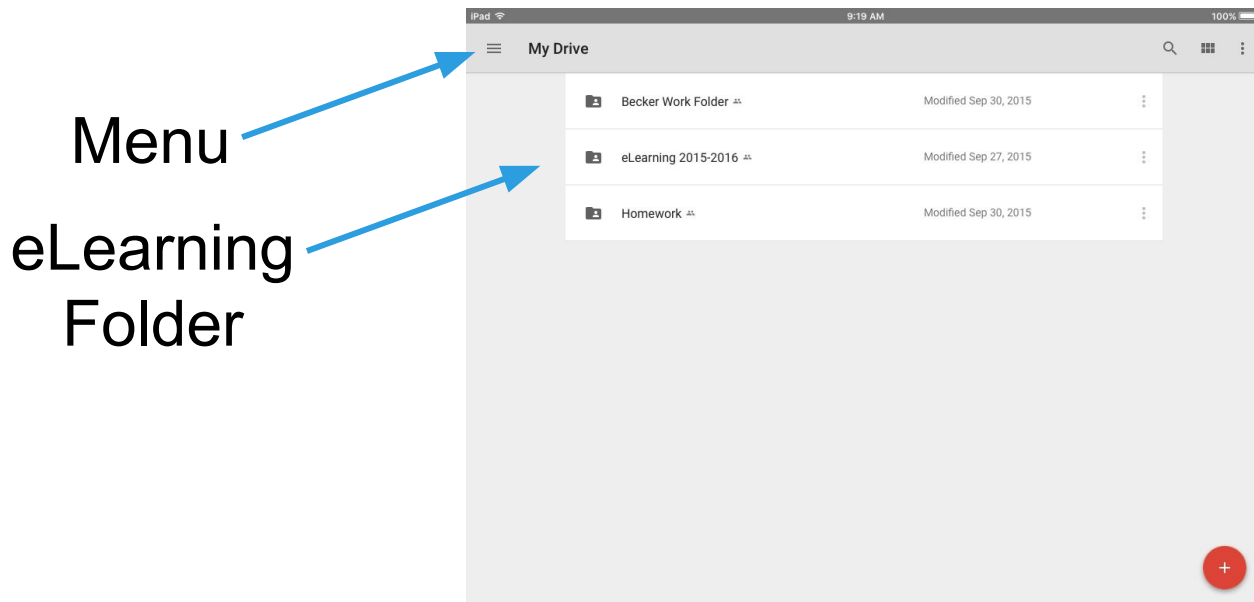
# Accessing Google Drive Content

You will need an Internet Connection to access your child's eLearning assignments. If you are unsure of how to connect an iPad to the Internet, see the iPad Wifi Connection help guide.



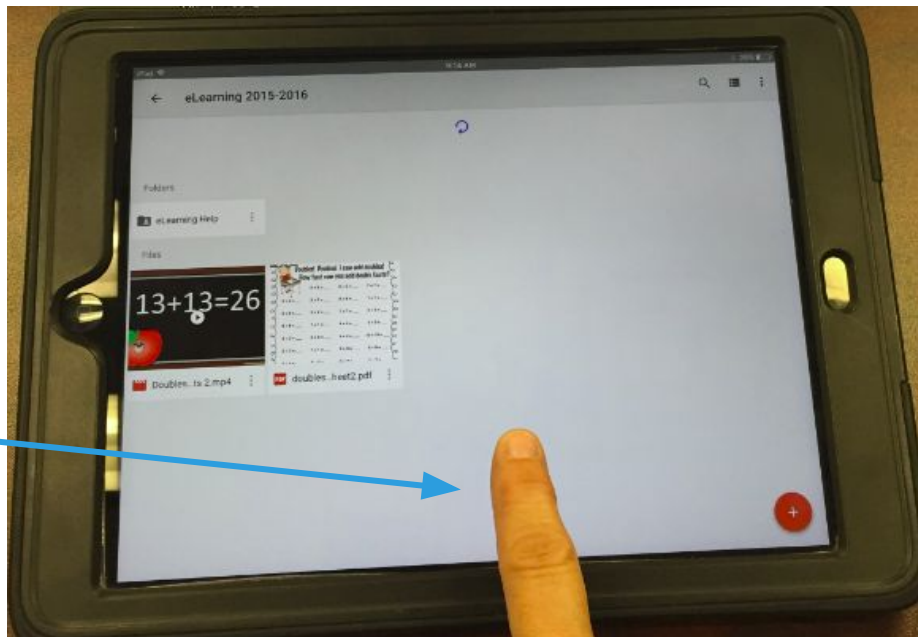
# Accessing Google Drive Content

Once you are connected to the Internet, open the Google Drive app. Look for the eLearning Folder in My Drive.



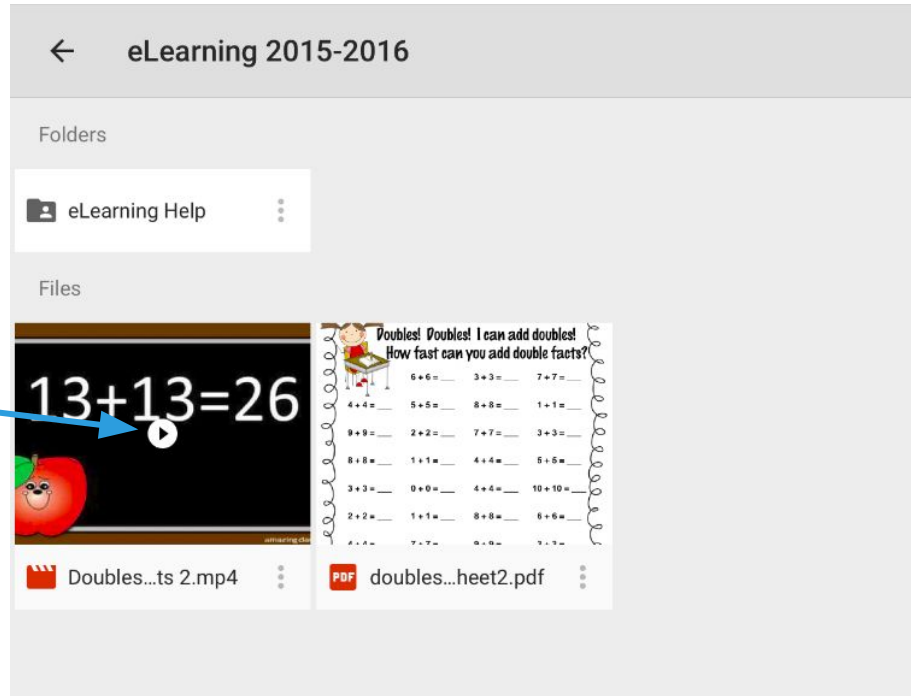
# Accessing Google Drive Content

After opening the eLearning folder, pull down the screen to refresh. This will load the new eLearning content.



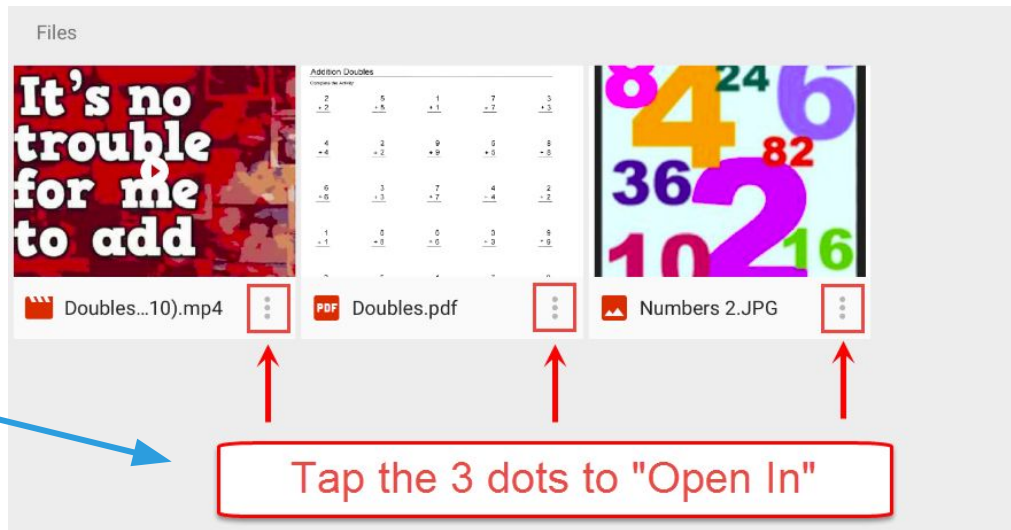
# Accessing Google Drive Content

Videos can be played right in Google Drive by tapping the Play button.



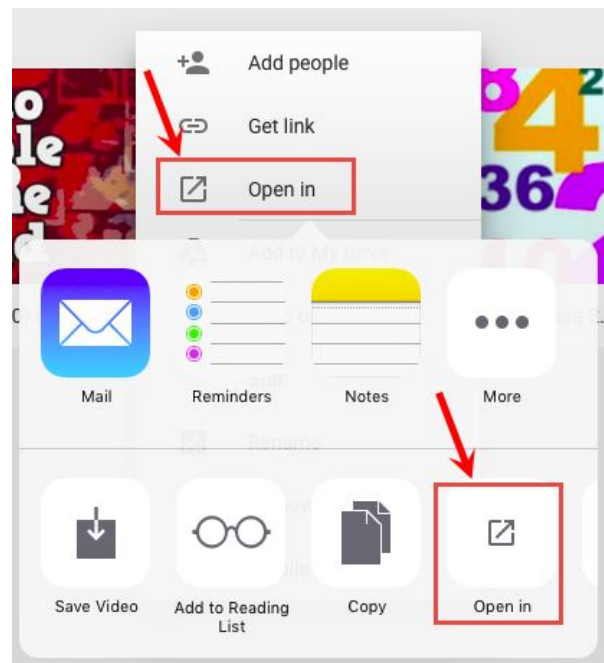
# Accessing Google Drive Content

If the teacher directions say to open a document in another app, tap the 3 dots to “Open In” another app.



# Accessing Google Drive Content

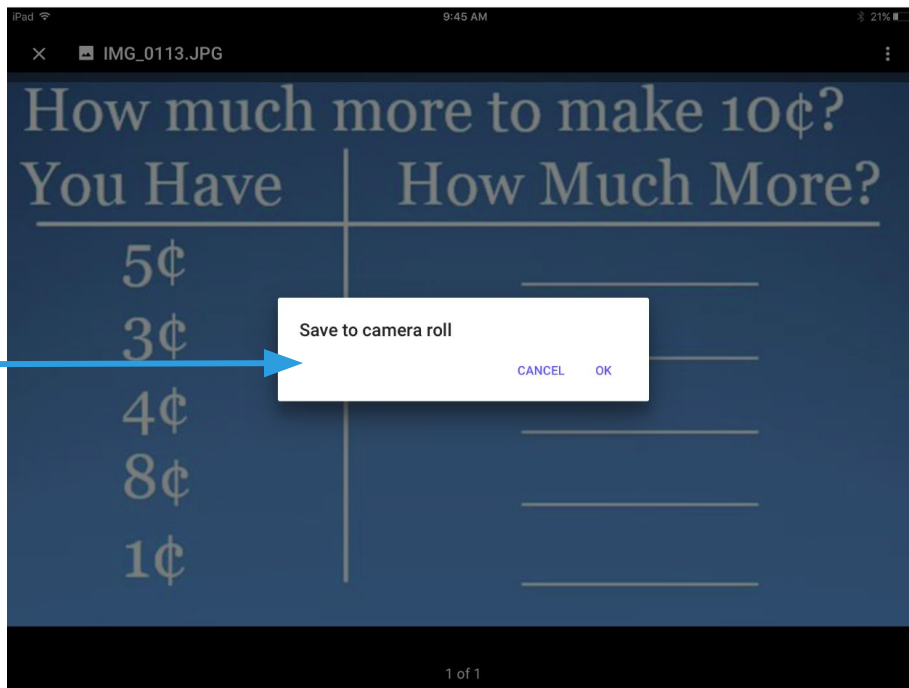
After tapping the 3 dots, choose “Open In” two times to open the document in another app.





# Accessing Google Drive Content

If the teacher directions say to save a picture to the Camera Roll, tap and hold the picture to save it.



# Families Without Internet



The Media Center at your child's school will be open after school following an eLearning Day(s), to download assignments.