



Accessing Google Drive Content eLearning 2016-2017



eLearning 2016-2017

Teachers will have
assignments posted
by 9:00 AM.



Google Drive
Grades K-4

eLearning 2016-2017

Accessing Google Drive Content

You will need an Internet Connection to access your child's eLearning assignments. If you are unsure of how to connect an iPad to the Internet, see the iPad Wifi Connection help guide.

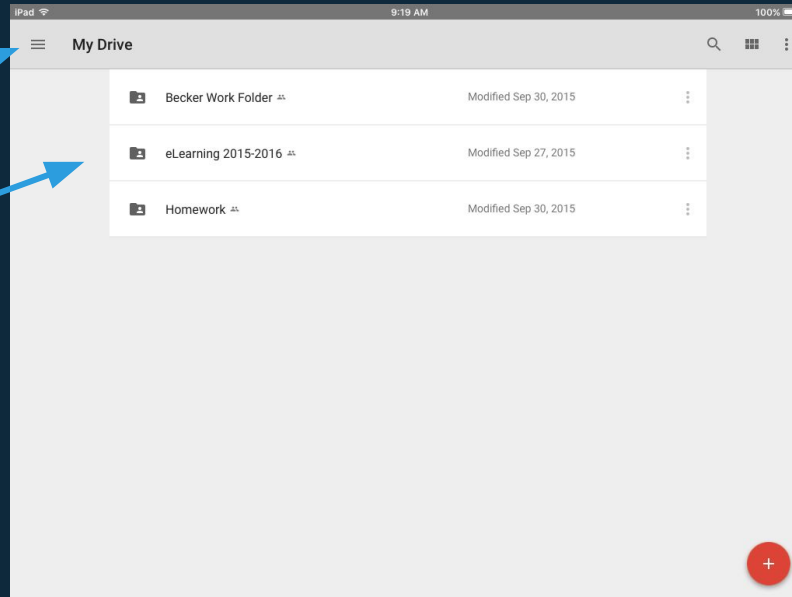


eLearning 2016-2017

Accessing Google Drive Content

Once you are connected to the Internet, open the Google Drive app. Look for the eLearning Folder in My Drive.

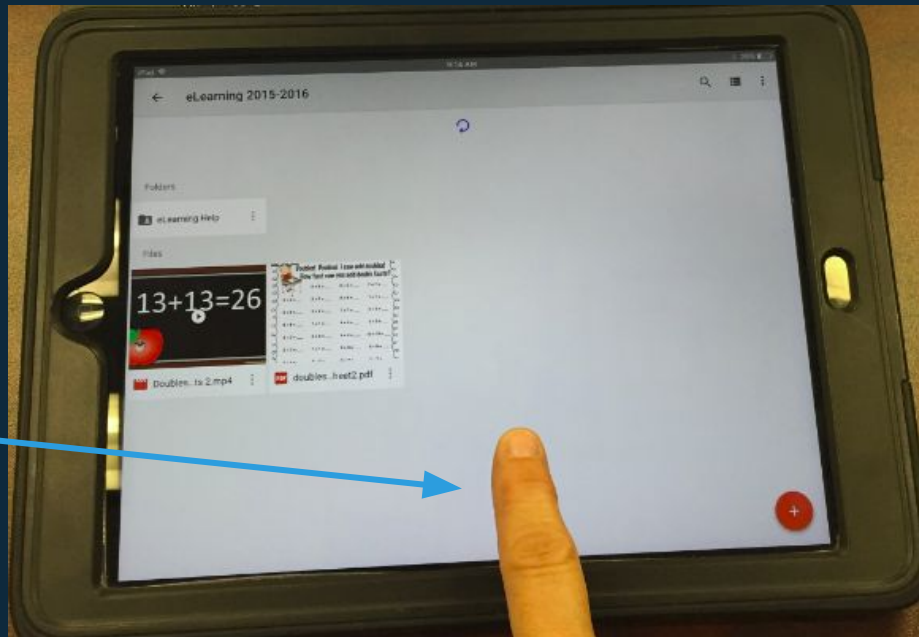
Menu
eLearning
Folder



eLearning 2016-2017

Accessing Google Drive Content

After opening the eLearning folder, pull down the screen to refresh. This will load the new eLearning content.



eLearning 2016-2017

Accessing Google Drive Content

Videos can be played right in Google Drive by tapping the Play button.

The screenshot shows a Google Drive interface for a folder named "eLearning 2015-2016". Under the "Files" section, there are two items: a video file "Doubles...ts 2.mp4" and a PDF file "doubles...heet2.pdf". The video thumbnail displays the equation $13+13=26$ with a play button icon overlaid. A blue arrow points from the text on the left to this play button. The PDF thumbnail shows a worksheet titled "Doubles! Doubles! I can add doubles! How fast can you add double facts?" with various addition problems.

Doubles! Doubles! I can add doubles! How fast can you add double facts?		
6+6=	3+3=	7+7=
4+4=	5+5=	8+8=
9+9=	2+2=	7+7=
8+8=	1+1=	4+4=
3+3=	0+0=	4+4=
2+2=	1+1=	8+8=
...



eLearning 2016-2017

Accessing Google Drive Content

If the teacher directions say to open a document in another app, tap the 3 dots to “Send a Copy” of the document to another app.

Folders

October 28

Files

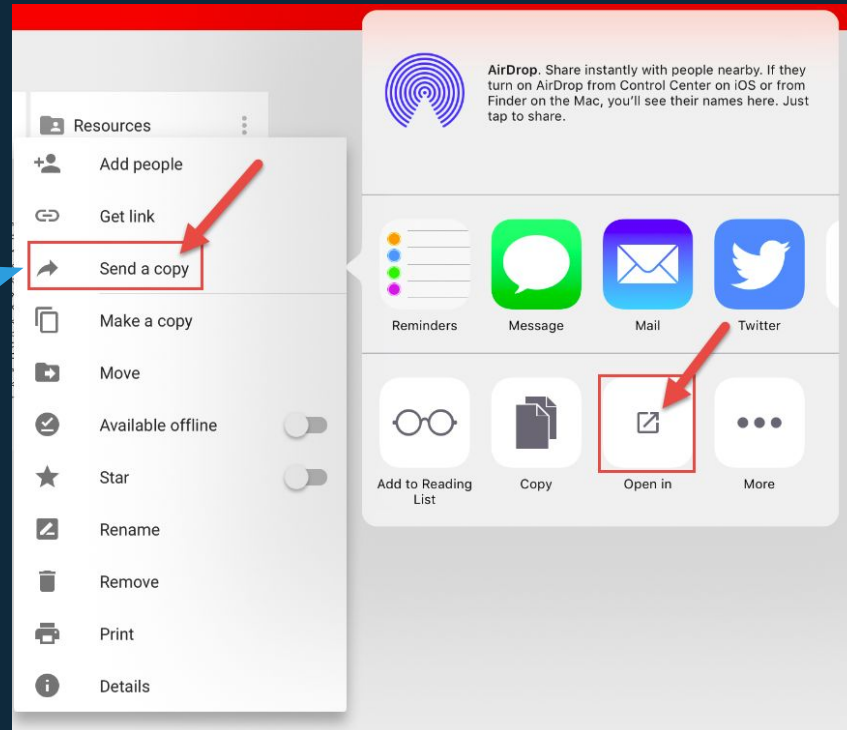
Icon	Name	Activity	Share
📄	2nd Gra...r 28, 2016	Learn and read about the story of Flat Stanley. Copy it up. Add drawings and fill in the boxes. Be sure to complete the Flat Stanley! Remember: Characters live in the story setting. Why do they do the job or profession? The characters do not have a car. Add details. (Teacher: Bring in a newspaper to do this.)	👤
📄	Flat Stan...ing.mp4	Learn and read about the story of Flat Stanley. Copy it up. Add drawings and fill in the boxes. Be sure to complete the Flat Stanley! Remember: Characters live in the story setting. Why do they do the job or profession? The characters do not have a car. Add details. (Teacher: Bring in a newspaper to do this.)	👤
📄	Flat Stan...plate.pdf	Learn and read about the story of Flat Stanley. Copy it up. Add drawings and fill in the boxes. Be sure to complete the Flat Stanley! Remember: Characters live in the story setting. Why do they do the job or profession? The characters do not have a car. Add details. (Teacher: Bring in a newspaper to do this.)	👤
📄	Spokoky...ctivity.pdf	Learn and read about the story of Flat Stanley. Copy it up. Add drawings and fill in the boxes. Be sure to complete the Flat Stanley! Remember: Characters live in the story setting. Why do they do the job or profession? The characters do not have a car. Add details. (Teacher: Bring in a newspaper to do this.)	👤

Tap the 3 Dots to "Send a Copy" to another app.

eLearning 2016-2017

Accessing Google Drive Content

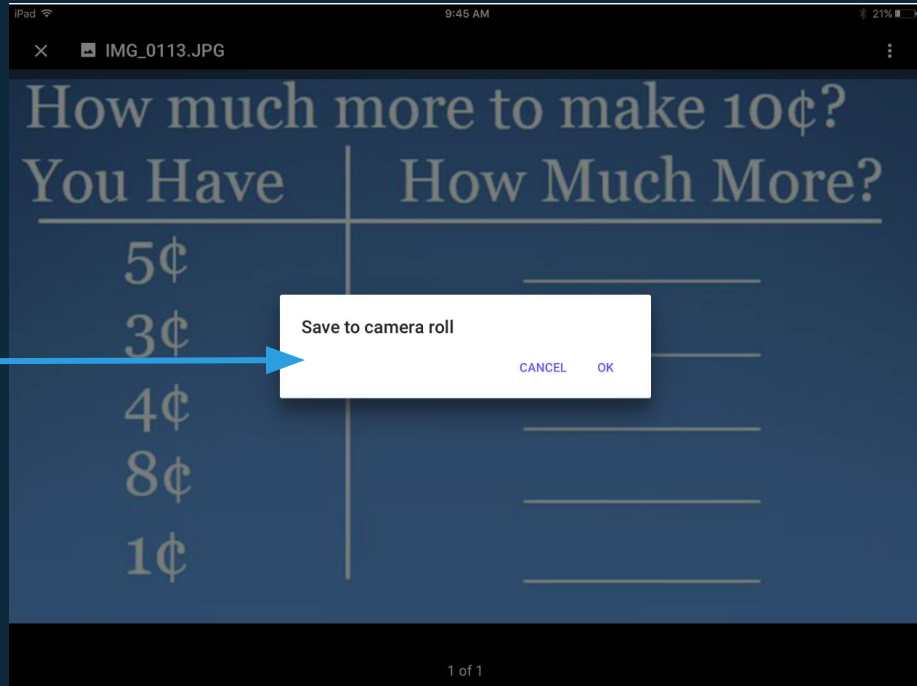
After tapping the 3 dots, choose “Send a Copy,” then “Open In” to open the document in another app.



eLearning 2016-2017

Accessing Google Drive Content

If the teacher directions say to save a picture to the Camera Roll, tap and hold the picture to save it.



eLearning 2016-2017

Families Without Internet



The Media Center at your child's school will be open for three days after school, following an eLearning Day(s), to download assignments.

